

AR-837-ER

Graphic Display Multi-Function Proximity Controller

IP-based controller supporting flush-mount and surface-mount installations and doorbell function; customizable panel design enhance overall building image



Communication Redundancy

Support TCP/IP and RS485 interface, when main communication disconnects, deputy communication will work to maintain normal work

Enhance waterproof functionality and wear-resistant

The seamless design of the touch panel prevents water entering the unit and enhance the waterproof function; the flat button will not wear out over time due to usage and causing the printed font to disappear.

Selectable Frequency

125KHz: Support EM card

13.56MHz : Support Mifare, NFC (emulate UID), DESFire (Crypto comply with EAL4+)

Multi-Language Menu Setting

Intuitive menu make functional setting simple, no need to memorize command set

8 Sets of Time Attendance

Duty On/Off, Break Out, Break Return, Overtime On/Off

Support SOYAL Cascade Structure

Built-in multiple control modes:

1. One door
2. Two door (with WG reader)
3. Multiple doors (with multi-door control panel)

Reader Mode Supported

Not only a controller, but a reader if utilized with other brand' s controller

2 Sets of UART Ports

Flexible integration with peripheral devices, like I/O module, floor control panel, LED display, infrared thermo-camera, etc.

Features



Illuminated Touch Panel



Double Relay



Door Bell



Complete Indicator



Quality in Color



Two Doors Control



Suitable for Extended Function



Web



Youtube

- Dual communication interfaces: RS485 and Ethernet (10/100M Base T)
- Built-in watchdog, real time clock, anti-vandalism switch, ingress protection, alarm setting, holiday edit, auto open door time zone, door group, door status DI, anti-pass-back function and duress code & output
- Support user capacity: 16,000 / 32,000 / 65,000 users
- Support floor control: 64 / 32 / 16 floors
- In case Ethernet disconnects, controller is still able to identify UID and record event log
- Multiple access mode: card only, card or password, card and password
- Two doors control: Two sets of push button and door status, relay output for lock and WG output for reader
- Multiple DO outputs: Lock, alarm, arming, duress and digital relay
- Supported frequency: 125kHz, 13.56MHz and dual band
- Standalone / Networking is switchable during working Support RS485 communication encryption, SSC (Soyal Security Communication)
- Communication Redundancy : Support TCP/IP and RS485 interface, when main communication disconnects, deputy communication will work to maintain normal work
- Patented relay design that can avoid the door mis-triggered by any vibration or external force

SPECIFICATION

Communication interface	Host	TCP/IP / RS485 (9600 bps) SSC (Soyal Security Communication)
	Serial	UART (TTL, 4800~115200 bps) X 2
Frequency	125kHz / 13.56Mhz / Dual Band	
Supported Tags	125kHz	ISO18000-2: EM4001 and EM4095 compatible
	13.56MHz	ISO14443 Mifare Ultralight / Classic / Plus / DESFire / - EV1/ EV2 / NFC (card simulation)/ISO15693 / Felica
Crypto	13.56MHz: CC Certification: AES Crypto comply with EAL5+	
RFID Reading Range	125kHz: 5-15 cm / 13.56MHz: 2-5 cm / S (Dual Band):2-15cm	
UID Bits	64	
DI / DO	DI	Egress X2 / Door State X2 / Door Bell
	DO	Door Bell Output / Security Output / Arming Output / Duress Output
	RO	Door Lock Relay / Alarm Relay
Doors	2 Door	
User Capacity / Floors Number	16,000 Users/64 Floors (Standard) : 32,000 Users/ 32 Floors : 65,000 Users/16 Floors	
Event Log	32,000	
Indicator	LED	6 Bi-Color LED Power / Alarm / Arming / OK / Error / In processing
	Buzzer	1
Extend Port	Tamper Switch / Tamper Output / WG In Port / WG Out Port	
Dimension (mm)	135(H)X103(W)X30(D)	
Housing Material	PC	
Color	Hairline texture printing	
Weight (g)	approx. 253	
Power Consumption	<5W	
Power Voltage	9-24VDC	
Ingress Protection	IP65	
Keypad	Illuminated Touch-Panel	
LCD Panel	128*64 (4 line messages, 16 Characters each line)	
Enviroment	Operating Temperature	-20°C ~ +65°C
	Storage Temperature	-25°C to +70°C
	Operating Humidity	20%~90%
	Storage Humidity	5%~95%

WHAT WE OFFER



Double Doors Control

Connected with Reader, it can manage 2 access control by a single unit of controller. The second set of access control also has the exit switch, door contact status and door output control, can also set different access level (such as - can access Door A but can not access Door B).



Real-Time Event Log Integration

After reading card, IP-based controller will actively send the event logs through port 8031 for the integration with the 3rd party program.



Auto-Schedule Function

AR-327-E special firmware connects with DO module AR-401RO16B, using Lift Control program enabling you to control each Digital Output and formulate a time schedule for each output, up to 64. It's suitable for each various switching devices, such as lighting, sprinkler system, air conditioning, etc



Extended Application of Auto Open Time

The Wiegand reader Auto-Open time zone setting is able to control the infrared activation function / output the second set of door contact functions at a specific time.



Auto-Alarm Function

Built-in 16 sets of alarm to output flash light, alarm clock, broadcast system, and each set of alarm can set the output time.



With 2 Sets of UART Port

It can be applied to:

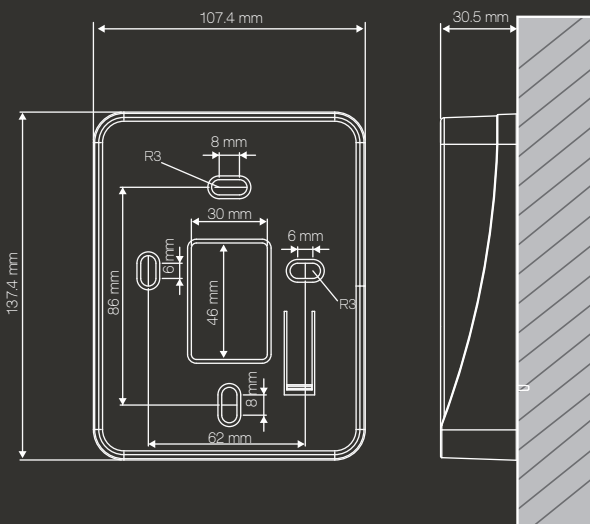
- (1) 256-point Mailbox Management System
- (2) Auto-scheduling control function-64-point DO control
- (3) Printer integration
- (4) Voice module (AR-721V-V2)



Reader Mode Supported

Controller can be set to Reader mode, with Wiegand output that can be integrated with various brands of controllers, with a dual-band format that turns into Wiegand dual-band Reader.

INSTALLATION(mm)



HOW TO ORDER

AR-837-ERXR1X11-X

Frequency

B=125kHz
D=13.56MHz
S=125kHz+13.56MHz

AR-837-ER

RTC
R=內建 RTC

Communication

1=RS485

Waterproof

1=Weatherproof

Additional Module

A=TCP/IP Module
P=POE Features

Language(LCD)

1=English/Chinese

Color

B=Black Edge
1=Silver Edge
O=Orange Edge

• Surface mounting hole(Front View)

• Surface mounting hole (Side view)

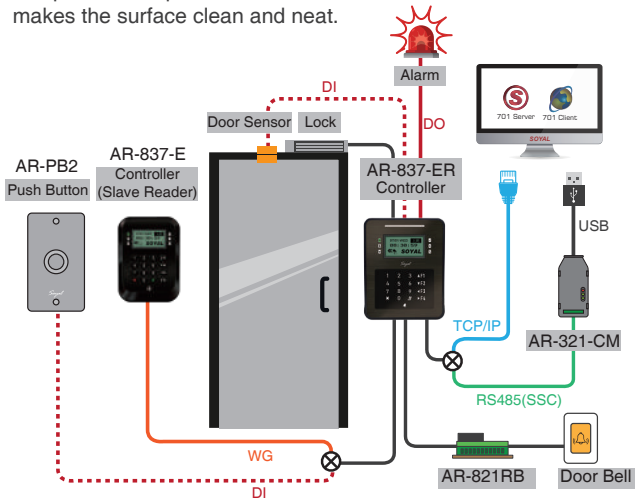
APPLICATION & STRUCTURE DIAGRAM

● STANDALONE & NETWORKING ACCESS CONTROL

Anti Passback: restrict user to re-enter before exiting venue or increase security level by having access reader at the other side of the door. Both entering and exiting will required swipe card or keyfob for access.

AR-837-E/EE can detect abnormal event with the door contact status in arming mode. When a forced entry or door opening too long, an alarm is generated and sent to the software, AR-837-E/EE alarm output can be equipped with a flash buzzer as warning on site.

Visitor can either press the door bell on AR-837-E/EE controller or external bells that being connected to relay module which use the independent output PIN , no need to install other door bells, it makes the surface clean and neat.



--16,000 User, 63 Timezone--

● BUILT-IN HTTP WEB SERVER

IP-Based Controller has built-in HTTP WEB Server for Access Control, just input IP address, have it logged in to remotely control a single controller, enabling adding User card, time zone setting, review event logs, etc, even more can remotely open/close door regardless the brand of computer and smart phone. As long as there is a WEB browser, the remote management function can be achieved.



Remote setting by computer, Pad, Smartphone

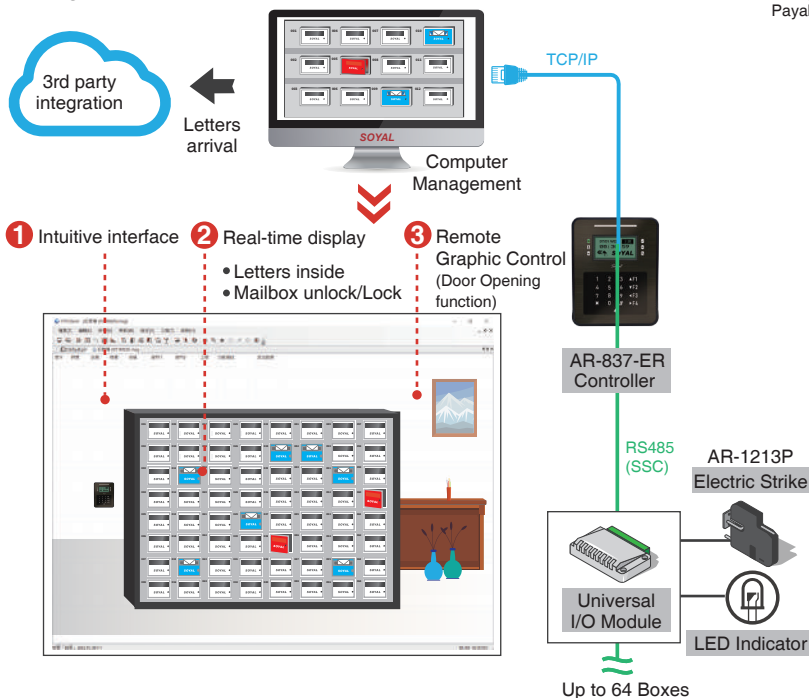


Support graphic animation and Pop-up real-time notification of abnormal events

● Smart Mailbox Integration Application

When letter arrives in mailbox, LED light will be flashing to remind user and send a real-time message to software 701Client Pop Graphic; when user swipe card to open mailbox and take out letter, then close the mailbox, LED light will be off and the message will be eliminated in 701Client Pop Graphic.

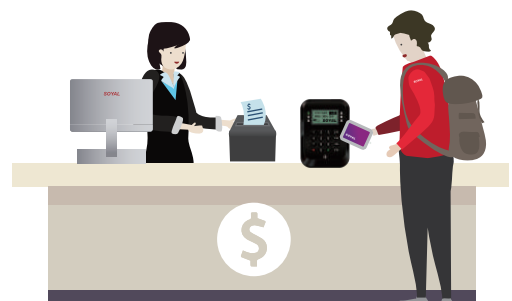
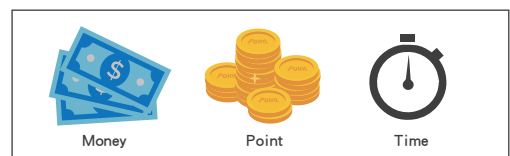
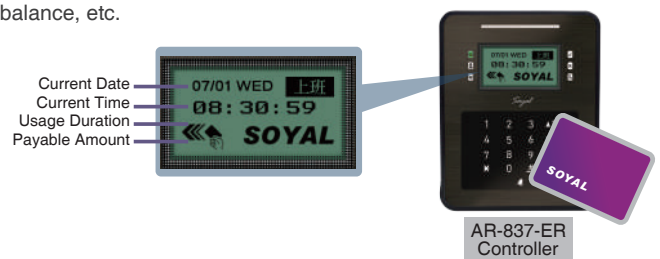
It can also detect whether the mailbox is not closed and activate alarm when open too long. In addition, no matter what is the status (letter inside or open too long), the controller always provide real-time information for third-party integration such as property management software.



● Offline Cashless Payment & Store Value Application

With SOYAL SOR MifareKey Encryption to manage offline cashless payment & to store value. According to customer needs to deduct the value by time duration, time frequency, etc.

Once swiping card, the LCD monitor will display the deduction and balance, etc.



PERIPHERALS / ACCESSORIES

HIGH LEVEL SECURITY

- Anti-Cloning Kits



Mifare Key

Mifare Encryption

Encoder: AR-725-P
Authorization Tags
Software: Mifare Key

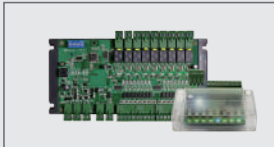


323D Master

Desfire Encryption

Encoder: AR-837-P
Authorization Tags
Software: 323D Master

- Expansion I/O Control



I/O Modules

AR-401 Series:
Multiple Channel I/O Module
AR-403 Series: Tiny Digital I/O Module

STANDALONE

- Input/Output



Locks

Magnetic Lock
AR-0600M
Electric Bolt Lock
AR-1207 Series
Cabinet Lock
AR-1211-P/AR-1213-P
Electric Strike
AR-YS-130NO/AR-YS-131NO



Door Sensor / Push Button / Door Bell / Alarm / Burglary Security System

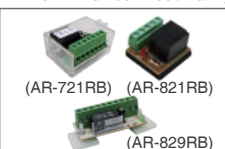
- Vision Series



837 Series

AR-837-EA
AR-837-P
AR-837-EF9DO/EF3DO
AR-837-E/EE

- External Relay Output
(Security / Arming / Duress / WIEGAND Unlock Door/Alarm)



1 Form C relay with time delay

AR-721RB

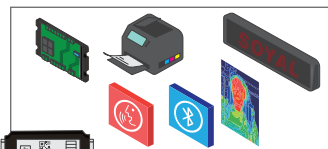
1 Form C relay

AR-821RB

2 Form C relay

AR-829RB

- UART Port x 2



Lift Control / I/O Module / Printer / LED display / Voice Module / Bluetooth Module / Infrared Thermo-Camera

- Programming • Necessary



Keyless Editing

Self programmed master card



Power Supply

BP-W12-1500 (1.5A)
BP-W15-2400 (2.4A)

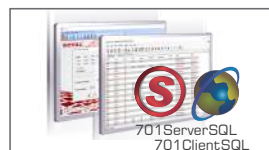


Proximity Tags

125kHz: EM
13.56MHz: Mifare Classic, Mifare Plus, Mifare Desfire, UltraLight
Tags Selection: Thin Card, Round Keyfob, Square Keyfob

NETWORKING

- Software



File Based & Data Based Interchangeable Software for Access Control, Time Attendance, Status Monitoring and Configuration
701 Server & 701 Client



Firmware Upgrade
UdpUpdater



Remote Lift Control and Time Table Setting
LiftControl

- Signal/Interface Converter



POE Module

AR-MDL-RJ45-POE-12V12W



Isolated USB to RS-485

AR-321-CM

Isolated RS232 to RS-485 Converter

AR-321-CM-485232



Ethernet to RS485

AR-727-CM
AR-727-CM-IO-0804M (with I/O for Fire Alarm to open all doors)

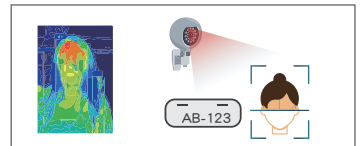
- Multi-Door AntiPassback



Multi-Door Control Series

AR-716-E16: 16 Doors IP Control Panel
AR-716-E18: 18 Doors IP Control Panel

- Extensive Applications (UDP/TCP)



Infrared Thermo-Camera, LPR (License Plate Recognition)

FAQ

Q: How to replace LCD display pictures in standby mode for SOYAL Enterprise Series controller?

A: E series LCD controllers can replace the pictures displayed in standby mode through a software tool, and can design the drawing file according to your needs, such as the company logo or building image, etc., which can improve the overall image.



◀ Scan QR cod to view

Q: How to do wiring connection for AR-837-ER with external door bell?

A: AR-837-ER has built-in door bell function, adding a relay module that can connect with external bells, no need to equip another door bell on decoration surface, it keeps the surface clean and neat, simple and elegant. Please scan below QRCode to view the steps of how to do.



◀ Scan QR cod to view



More FAQ